

USB UI-1460SE

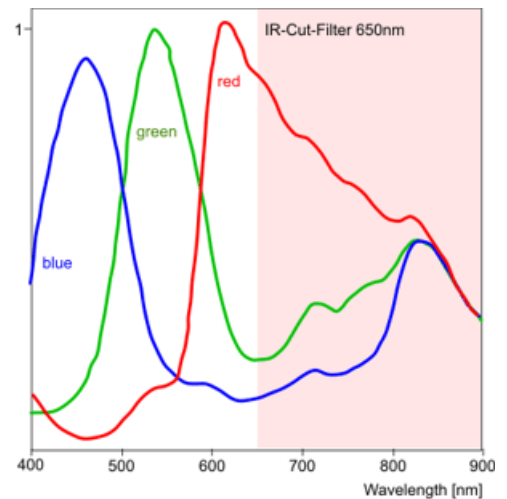
The UI-1460SE is an ideal all-round camera with USB 2.0 interface and Aptina CMOS sensor in 3.1 Megapixel resolution (2048x1536 pixels). Both digital I/Os for trigger and flash control are opto-coupled and accept signals with up to 30 V. A variety of cable types with robust, lockable connectors complements the model range. With its compact metal housing and M3 mounting holes the UI-1460SE is ideally suited for use in automation and quality inspection. For OEMs we offer versions without housing and front flange on request.



Specification

The characteristics at a glance

Interface	USB Lens
Mount	C-Mount
Sensor Technology	CMOS (Aptina)
Model Description (color)	UI-1460SE-C
Model Description (mono)	---
Resolution (h x v)	2048 x 1536
Resolution Depth	8bit (10bit ADC)
Resolution Category / Pixel Class	3.1 Megapixel
Sensor Size	1/2"
Shutter	Rolling max.
fps in Freerun Mode	11 fps
Exposure Time in Freerun Mode	57µs-1.75s
Exposure Time in Trigger Mode	57µs-750ms
AOI Modes	horizontal + vertical
Binning Modes	horizontal + vertical
Subsampling Modes	horizontal + vertical
I/O - Strobe	1
I/O - Trigger	1
I/O - RS-232	-
I/O - GPIO	-
I/O - I2C	-
HDR (High Dynamic Range)	-
Sensor Model (m/c)	- / MT9T001STC
Pixelpitch in µm	3.20
Optical Size	6.554 x 4.915 mm
Protection Classes	IP30
Dimensions H/W/L	34.00 mm, 32.00 mm, 27.40 mm
Mass	62.00 g
Power Supply	USB



USB UI-1480SE

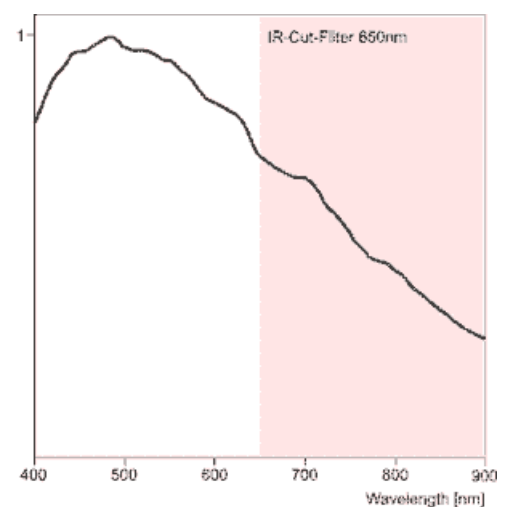
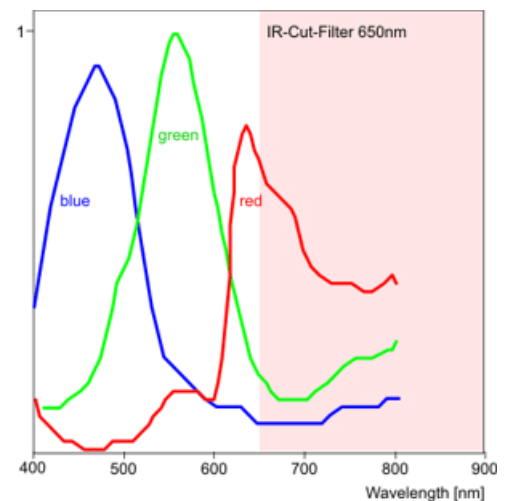
The UI-1480SE is an ideal all-round camera with USB 2.0 interface and Aptina CMOS sensor in 5 Megapixel resolution (2560x1920 pixels). Both digital I/Os for trigger and flash control are opto-coupled and accept signals with up to 30 V. A variety of cable types with robust, lockable connectors complements the model range. With its compact metal housing and M3 mounting holes the UI-1480SE is ideally suited for use in automation and quality inspection. For OEMs we offer versions without housing and front flange on request.



Specification

The characteristics at a glance

Interface	USB Lens
Mount	C-Mount
Sensor Technology	CMOS (Aptina)
Model Description (color)	UI-1480SE-C
Model Description (mono)	UI-1480SE-M
Resolution (h x v)	2560 x 1920
Resolution Depth	8bit (12bit ADC)
Resolution Category / Pixel Class	5 Megapixel
Sensor Size	1/2"
Shutter	Rolling Shutter + Global Start
max. fps in Freerun Mode	6 fps
Exposure Time in Freerun Mode	75µs-2745ms
Exposure Time in Trigger Mode	75µs-2745ms
AOI Modes	horizontal + vertical
Binning Modes	horizontal + vertical
Subsampling Modes	horizontal + vertical
I/O - Strobe	1
I/O - Trigger	1
I/O - RS-232	-
I/O - GPIO	-
I/O - I2C	-
HDR (High Dynamic Range)	-
Sensor Model (m/c)	MT9P031STM / MT9P031STC
Pixelpitch in µm	2.20
Optical Size	5.632 x 4.224 mm
Protection Classes	IP30
Dimensions H/W/L	34.00 mm, 32.00 mm, 27.40 mm
Mass	62.00 g
Power Supply	USB



USB UI-1490SE

The UI-1490SE is an ideal all-round camera with USB 2.0 interface and Aptina CMOS sensor in 10 Megapixel resolution (3840x2760 pixels). Both digital I/Os for trigger and flash control are opto-coupled and accept signals with up to 30 V. A variety of cable types with robust, lockable connectors complements the model range.

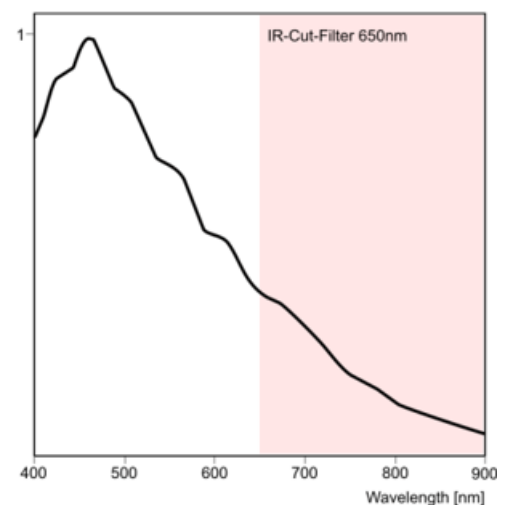
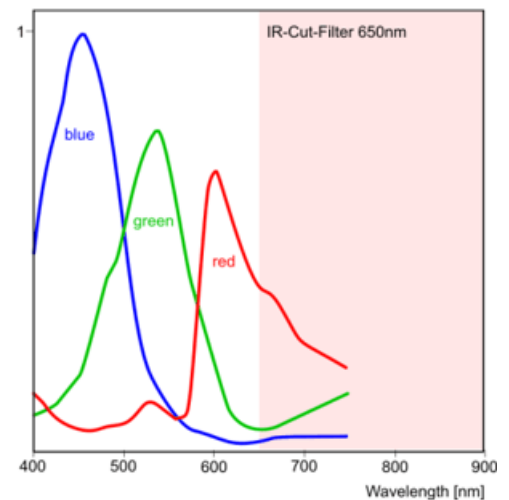
With its compact metal housing and M3 mounting holes the UI-1490SE is ideally suited for use in automation and quality inspection. For OEMs we offer versions without housing and front flange on request.



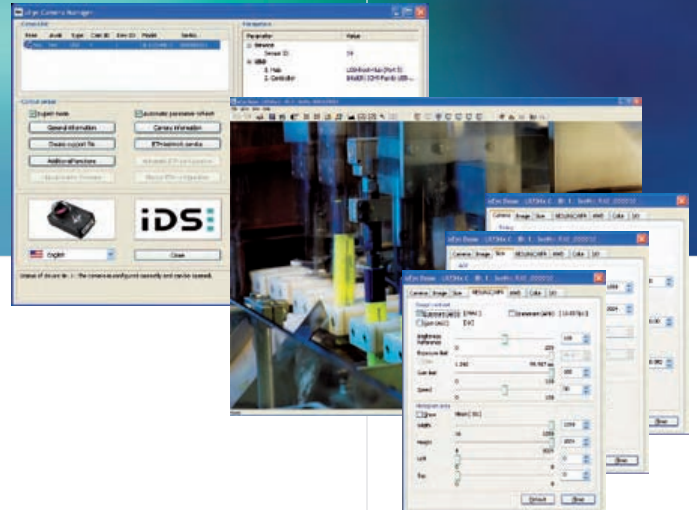
Specification

The characteristics at a glance Interface

Interface	USB
Lens Mount	C-Mount
Sensor Technology	CMOS (Aptina)
Model Description (color)	UI-1490SE-C
Model Description (mono)	UI-1490SE-M
Resolution (h x v)	3840 x 2760
Resolution Depth	8bit (12bit ADC)
Resolution Category / Pixel Class	10 Megapixel
Sensor Size	1/2"
Shutter	Rolling
max. fps in Freerun Mode	3 fps
Exposure Time in Freerun Mode	
Exposure Time in Trigger Mode	
AOI Modes	horizontal + vertical
Binning Modes	horizontal + vertical
Subsampling Modes	horizontal + vertical
I/O - Strobe	1
I/O - Trigger	1
I/O - RS-232	-
I/O - GPIO	0
I/O - I2C	-
Sensor Model (m/c)	MT9J003STM / MT9J003STC
Pixelpitch in μm	1,67
Optical Size	6,413 x 4,589 mm
Protection Classes	IP30
Dimensions H/W/L	34,00 mm, 32,00 mm, 27,40 mm
Mass	62,00 g
Power Supply	USB



Very Easy Integration Thanks to Comprehensive Software



Programming: SDK and interfaces

With every uEye camera, you receive a comprehensive software package with drivers for Windows and Linux. Interfaces for various image processing packages, standard drivers such as DirectShow (WDM), a GenICam™ interface as well as our Software Development Kit (SDK) allow individual integration within a very short time.

Programming: Languages and libraries

To make integration as easy as possible and allow use of your familiar development environment, we support the following programming languages: C, C++, C#, Microsoft .NET and Visual Basic. We also provide 3rd party software drivers for Activision Tools, Common Vision Blox, HALCON, LabView, and NeuroCheck.

Tools: Easy configuration

The uEye Camera Manager is the central tool for managing all uEye connected to the system. An expert mode gives you additional details on the connected cameras. This central tool helps you avoid bottlenecks and achieve maximum performance.

Tools: uEye® Demo

The supplied uEye demo program allows you to start acquiring images with your uEye camera in no time at all. It also allows you to perform image measurement and annotation, in addition to giving you all the tools to configure optimal camera settings for your application.

The uEye® Software

